



ADA NSW
Centre for
Professional
Development

AUSTRALIA'S LEADING
PROVIDER OF DENTAL
PROFESSIONAL
DEVELOPMENT

PROGRAM GUIDE

TASMANIA

2024



**North & North West
Tasmanian
Study Group**



**Southern Tasmanian
Study Group**

CALENDAR OF EVENTS

- 3 Emotional Intelligence Workshop: Evolve Your EI
- 4 Introduction to Sustainability for Dentistry
- 5 Fundamentals of Ceramic Inlays, Onlays & Overlays
- 6 Don't Risk It
- 7 Infection Prevention and Control – Still Achieving Best Practice
- 8 Health-e Smoking?
- 9 Oral Medicine Update



DATE: Saturday 02 March 2024

TIME: 8:30am - 4:30pm (lecture), 5:30pm - 9:00pm (social)

CPD HOURS: 7.0

VENUE: The Old Woolstore, 1 Macquarie Street, Hobart, TAS 7000

COSTS INC GST

ADA Member	\$640
Non Member	\$832
ADA Member (Non-NSW)	\$640
Recent Grad	\$512
Hyg/OHT/Prosthetist	\$512
Student	\$512
Dental Team	\$512



Evolve Your EI

Unlock your full potential and learn how to grow your emotional intelligence (EI).

Presented by Amy Jacobson

COURSE OUTLINE

Don't miss this full-day workshop, presented by renowned author, EI and human behaviour specialist, Amy Jacobson.

Inspirational leaders and outstanding performers all share an emotionally intelligent mindset - combining their technical expertise together with the ability to understand what makes them and the people around them tick.

They are self-aware and know it's about responding in an emotionally intelligent way to each situation and circumstance.

Amy will break down misconceptions around EI and help you grow your EI through a combination of tough love and infectious energy in this exciting, hands-on workshop. This course is perfect for the whole team, with an evening of networking and canapés to follow.

COURSE TOPICS

- Understand what EI is and how it plays a significant role in your everyday life.
- Tap into your subconscious mind to discover key elements of the 5 areas of EI, the workings of the emotional brain and how to evolve your EI.
- Understand how self-awareness, emotional management, communication and how we behave can have long-term impacts on our relationships, performance levels and overall success.
- Learn about the 5-part methodology and how to be an unstoppable version of yourself.

ABOUT THE PRESENTER

Amy Jacobson

Amy Jacobson is an experienced EI and human behaviour specialist, delivering emotional intelligence programs, keynotes & workshops across Australia and the international markets.

As the Wiley published Author of 'Emotional Intelligence: A simple and actionable guide to increasing performance, engagement and ownership', and a Media Personality across television, radio and print, Amy's mission is to break down misconceptions around E.I. and help people to increase their emotional intelligence.

With over 19 years' experience of more than doubling engagement and market brand scores, both her passion and her determination to help people own it, take control and be unstoppable is unparalleled. Combining her balance of tough love and infectious energy, using custom-developed tools and systems, Amy creates purpose-driven teams who get results!

WELCOME EVENT

Enjoy networking opportunities with your ADA Tasmania colleagues at the first social event of the year, a cocktail function immediately following the workshop.

Admission to the cocktail function is included with your event registration.

Unable to attend the workshop but interested in the social event? Contact ADA NSW CPD directly to discuss your options.



DATE: Wednesday 10 April 2024

TIME: 6:30PM - 8:00PM

CPD HOURS: 1.5

VENUE: ONLINE

COSTS INC GST

ADA Member	\$140
Non Member	\$165
ADA Member (Non-NSW)	\$140
Recent Grad	\$129
Hyg/OHT/Prosthetist	\$129
Dental Team	\$129



Introduction to Sustainability for Dentistry

Sustainability concepts that consider relevant health service management and IPC frameworks

Presented by **Kylie Robb**

COURSE OUTLINE

Sustainability is more than a buzzword that only focuses on environmentally friendly practices and reducing waste. Sustainability is the future of business and healthcare and now is the time to get started with the journey. Join ADA NSW's Kylie Robb in this interactive short online course and get inspired with practical tips and ideas that can be implemented right away. Learn about strategies to measure the success of your efforts while improving team performance, and discover ways to inform your patients, colleagues, and healthcare consumers of your good work without 'greenwashing' your practice.

COURSE TOPICS

- Introduction to the sustainability landscape and what resources are already available to get started
- How to get started by prioritising sustainability efforts - understanding that you can't do everything
- Creating a simple framework for implementing sustainability into a dental setting
- Explore how sustainability can create an innovative work environment that attracts and retains talent
- Gain the confidence to reduce single-use plastics
- How to appropriately communicate your efforts in contributing to a sustainable future

ABOUT THE PRESENTER

Kylie Robb

Kylie is the head of practice services at ADA NSW and is also a fellow and board director of ACIPC. Kylie works closely with several Australian universities providing lectures and leadership on IPC and dental practice sustainability including the University of Sydney's School of Dentistry.

Kylie is often sought by other peak bodies, government agencies, public oral health services, universities and dental corporates for her IPC and quality improvement expertise. Kylie has presented to the World Health Organisation's western pacific regional office IPC network and was appointed onto the Society for Healthcare Epidemiology of America's coveted International Ambassadors Program. Kylie is currently studying at the University of Cambridge's Institute for Sustainability Leadership in England.



**North & North West
Tasmanian
Study Group**



**Southern Tasmanian
Study Group**



DATE: Saturday 25 May 2024

TIME: 9:00am - 4:30pm

CPD HOURS: 6.5

VENUE: Peppers Silo Launceston (89-91 Lindsay Street, Invermay, TAS 7248)

COSTS INC GST

ADA Member	\$925
Non Member	\$1,156
ADA Member (Non-NSW)	\$925
Recent Grad	\$740



Fundamentals of Ceramic Inlays, Onlays & Overlays

A comprehensive course in ceramic onlays and the most efficient ways to use dental materials

Presented by Dr Kunal Pandya

COURSE OUTLINE

The dental materials you used in dental school are not the same dental materials available today. With the introduction of new dental materials, and the improvement made in familiar materials, there is a need for dental practitioners to evolve their skills in using them.

Current dental materials allow for a more aesthetic result while using more conservative practices. However, the key to this success is to understand the intricacies involved with using these materials correctly, to develop an effective plan, and to apply innovative restorative treatment techniques.

This is a comprehensive course in ceramic onlays and the most efficient ways to use dental materials.

Discover the science of dental bonding and walk through the steps of the cementation process, plus identify common cementation errors - so not to repeat them. Following an informative lecture, you will then experience a hands-on workshop where you can immediately apply these innovative techniques, and receive constructive feedback to help develop your skills.

LEARNING OBJECTIVES

- Develop a thorough case assessment
- Dental material product review of best use and indications
- Strategies to minimise risk
- Practical preparation techniques (Hands-on)
- Bonding and cementation systems (Hands-on)

ABOUT THE PRESENTER

Dr Kunal Pandya

Kunal Pandya completed his undergraduate dental training at the University of Queensland in 2002. He worked in general practice for four years, prior to commencing specialist prosthodontic training at the University of Melbourne. Now as a specialist prosthodontist in Collins St Melbourne, Kunal has a focus on conservative & aesthetic dentistry and enjoys sharing this philosophy both in his involvement with CPD courses as well as teaching on the prosthodontic post graduate program at the University of Melbourne.



CPD on the go

The Dental Practitioner, podcasts for the profession

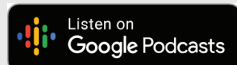
The Australian Dental Association NSW Centre for Professional Development presents a series of podcasts for dental professionals. Listen to interviews with healthcare professionals, industry experts and CPD course lecturers as they talk about the dental landscape in Australia and the growing trends in dentistry and oral health care.

The Brush Up, podcasts for the new dental professional

Tune in to a series of podcasts aimed at helping recent graduates as they set out on their dental careers. The Brush Up features interviews and discussions on the topics that matter most to recent graduates, including;

- navigating the early years of practice
- making new connections with the industry
- expanding your knowledge as professionals.

Visit cpdpodcasts.adansw.com.au or listen on Apple Podcasts, Google Podcasts or Spotify.



THE BRUSHUP

Podcasts
for the
new dental
professional





DATE: Saturday 10 August 2024

TIME: 6:00PM - 9:30PM

CPD HOURS: 2.5

VENUE: Crowne Plaza Hobart, Pandani Room (110 Liverpool Street, Hobart TAS 7000)

COSTS INC GST

ADA Member	\$350
Non Member	\$473
ADA Member (Non-NSW)	\$350



Don't Risk It

Practical risk management advice from the experts

Presented by **Christie Boucher (Guild Insurance)**

COURSE OUTLINE

Join Christie Boucher, Risk Services Manager for Guild Insurance Australia, for a delightful evening at the Crowne Plaza Hobart for two informative risk management seminars and a three-course dinner with networking opportunities to follow.

Discover common insurance pitfalls and learn how you can avoid them altogether through improved clinician-patient communication and compliant marketing activities.

COURSE TOPICS

- **Safe Social Media Use** - Whether we love it or loathe it, social media use is increasing all the time in both our personal and professional lives. While social media has many benefits, it can also lead to many problems if not used well. This session will explore the risks of using social media, the impact of personal social media use on person's professional reputation as well as provide tips for how social media risks can be minimised.
- **Understanding the Relationship Between Poor Communication and Patient Complaints** - As a dentist, your clinical and technical knowledge and skills are incredibly important and at the core of what you do. However, Guild Insurance's claims experience tells us that communication breakdowns are at the core of patient complaints. Yes, poor clinical outcomes will lead to complaints. Yet when we delve deeper into the root cause of these complaints, we generally find a communication breakdown has occurred. This session will help attendees better understand common communication errors and how communication can be improved.

ABOUT THE PRESENTER

Christie Boucher

Christie has over 20 years' experience as an educator having started her career as a secondary school health and physical education teacher. For more than 15 years Christie's career has been focused on developing risk management education resources and programs for various health professionals. Christie has a keen interest in the role education can play in managing risk by raising awareness and changing behaviour.





DATE: Saturday 14 September 2024

TIME: 9:00AM – 4:30PM

CPD HOURS: 6.5

VENUE: Peppers Silo Launceston (89-91 Lindsay Street, Invermay TAS 7248)

COSTS INC GST

ADA Member	\$540
Non Member	\$729
ADA Member (Non-NSW)	\$540
Recent Grad	\$432
Hygienist/OHT	\$432
Dental Team	\$432
Dental Student	\$432



Infection Prevention and Control - Still Achieving Best Practice

The premier source of contemporary infection prevention and control (IPC) information for the dental profession

Presented by **Kylie Robb**

COURSE OUTLINE

Delivered face-to-face, this is a comprehensive, fun and interactive course that distils vast amounts of important and dynamic information into sensible and manageable risk-based concepts. This ADA NSW course constantly evolves and has supported thousands of dental practices across Australia to confidently navigate IPC best practice moving forward.

COURSE TOPICS

- IPC regulatory landscape and professional obligations for dental practitioners in Australia
- Managing IPC risk to practise in a way that minimises the spread of infection
- Accountability for IPC in a dental setting to ensure good clinical outcomes
- The required elements for the transmission of infection
- The two-tiered approach to achieve successful IPC
- Got a Moment? Getting hand hygiene under control
- Streamlining criteria for escalating care with surgical aseptic technique
- Managing Reprocessable Medical Devices (RMDs)
- Clarify Dental Unit Water Line (DUWL) management protocols

LEARNING OBJECTIVES

- Understand the Australian professional, legal, and regulatory requirements for IPC
- See how various business models in dentistry impact the strategic direction of IPC program objectives
- Gain awareness of contemporary tools, documents, and resources to support practitioner self-reflection and good infection control
- Learn about relevant risk management frameworks applicable to a dental setting
- Understand the conditions that foster the spread of infectious disease and learn how to 'Break the Chain'
- Understand Standard and Transmission Based Precautions and when and how to apply
- Gain confidence for applying the 5 Moments for Hand Hygiene in a dental setting
- Streamline decision making for when surgical aseptic technique would be applied
- Reflect on your approach and identify quality improvement opportunities for RMD management; and
- Understand key terminology for DUWLs and how this relates to action back at the practice.

ABOUT THE PRESENTER

Kylie Robb

Kylie is the head of practice services at ADA NSW and is also a fellow and board director of ACIPC. Kylie works closely with several Australian universities providing lectures and leadership on IPC and dental practice sustainability including the University of Sydney's School of Dentistry.

Kylie is often sought by other peak bodies, government agencies, public oral health services, universities and dental corporates for her IPC and quality improvement expertise. Kylie has presented to the World Health Organisation's western pacific regional office IPC network and was appointed onto the Society for Healthcare Epidemiology of America's coveted International Ambassadors Program. Kylie is currently studying at the University of Cambridge's Institute for Sustainability Leadership in England.



DATE: Wednesday 23 October 2024

TIME: 7:00PM - 8:30PM

CPD HOURS: 1.5

VENUE: ONLINE

COSTS INC GST

ADA Member	\$140
Non Member	\$165
ADA Member (Non-NSW)	\$140
Recent Grad	\$129
Hygienist/OHT	\$129
Dental Team	\$129



Health-e Smoking?

Discuss the general and oral health risks associated with vaping and the role of the dental team in patient education

Presented by Dr Sue-Ching Yeoh

COURSE OUTLINE

Over the last decade, vaping has become a common social habit. It has gained significant popularity with younger age groups, leading to much controversy. This presentation will discuss vaping from an Australian perspective, including access, use and health outcomes. We will discuss general and oral health risks associated with vaping, and explore the role of the dental team in patient education.

LEARNING OBJECTIVES

- Understand the Australian trends in vaping access and use
- Become familiar with health outcomes associated with vaping
- Consider the role of the dental team in patient education

ABOUT THE PRESENTER

Dr Sue-Ching Yeoh

Dr Sue-Ching Yeoh is an AHPRA registered Oral Medicine Specialist, and maintains a specialist private practice Sydney as well as with a clinical appointment at the Royal Prince Alfred Hospital, and Chris O'Brien Lifehouse.

She has significant experience in the management of oral conditions in medically compromised patients, particularly in the fields of Haemato-Oncology, Head and Neck Oncology, Immunology and Rheumatology, and Dermatology. Dr Yeoh's clinical interests include oral mucosal disease, odontogenic pathology, salivary gland pathology, orofacial pain and temporomandibular dysfunction.



**North & North West
Tasmanian
Study Group**



**Southern Tasmanian
Study Group**



DATE: Saturday 23 November 2024

TIME: 9:00AM - 4:30PM (lecture), 5:30pm - 9:00pm (social)

CPD HOURS: 6.5

VENUE: Hotel Grand Chancellor Launceston (29 Cameron Street, Launceston TAS 7250)

COSTS INC GST

ADA Member	\$640
Non Member	\$832
ADA Member (Non-NSW)	\$640
Recent Grad	\$512
Hyg/OHT/Prosthetist	\$512
Dental Team	\$512



Oral Medicine Update

Build your confidence around diagnosing suspicious lesions and managing complex patients

Presented by Associate Professor Mark Schifter

COURSE SUMMARY

Three detailed lectures across one comprehensive, full day seminar.

- **Orofacial Pain (aka - No Diagnosis = No (Irreversible) Treatment)** - Diagnosing and managing pain arising from the dental and associated oro-facial region can be complex, confusing, and challenging. What may seem to be simple toothache, can also be neuropathic pain, temporomandibular joint disorder, trigeminal neuralgia, or a functional pain, that is pain without a clear organic basis. Practitioners need to give pause, because without a clear diagnosis, one should not embark on irreversible treatment. This seminar is designed to refresh your understanding of pain, its causes, the difficulties in the diagnosis and management of pain, with an emphasis on complex chronic orofacial pain, including temporomandibular disorders, as well as review the range of analgesic agents available and their safe and effective use.

- **Dental Care of the Patient with Cancer** - The patient with cancer brings a complex web of challenges for the general practitioner to navigate. Established therapies, surgery, radiotherapy and chemotherapy are continuously evolving, and cause significant morbidity and adverse dental/oral complications and manifestations. Newer therapies, such as the biologic agents, the small molecules agents (TKIs) and the immune-modifying agents are also resulting in unexpected dental/oral complications and adverse effects. Discover how you can better navigate these complex issues, improve your diagnoses, and manage complex orofacial pain in your patients in this comprehensive lecture.

- **Oral Cancer** - Lip and oral cancer are considered to be "the Dentist's Cancer", in that the Dentist and Oral Health Providers are best placed and trained for screening and detecting lip and oral cancer. This session will review the biology of lip and oral cancer, and the treatment of these cancers and review potentially-malignant disorders, that is pre-cursor lesions (and conditions) that can transform to cancer, and their diagnosis and management. Additionally, the role of the Dentist/OHT in the care of the patient with lip and oral cancer in the pre-treatment, perioperative and post-treatment phases will be addressed, including late complications of radiotherapy, namely osteoradionecrosis.

ABOUT THE PRESENTER

Mark Schifter

Mark Schifter is an A/Professor in Oral Medicine, School of Dentistry, Faculty of Medicine and Health, The University of Sydney. He obtained his specialist qualifications in Oral Medicine, also from the University of Sydney in 1998. He was the Convenor/Coordinator of the specialist-training program in Oral Medicine, Sydney Dental School, Faculty of Medicine and Health, University of Sydney for close to 20-years.

Mark is a Staff Specialist in Oral Medicine, Department of Oral Medicine, Oral Pathology and Special Needs Dentistry at Westmead Hospital. He has had over 20 years in specialist oral medicine practice and direct practical experience in the assessment and care of medically-complex patients, both in the out-patient and in-patient setting. Mark also holds appointments as a Specialist in Oral Medicine with The Skin Hospital

(Darlinghurst) and Chris O'Brien Lifehouse (Head and Neck Cancer Clinic).

He has contributed to the training of all (but one) of the current oral medicine specialists in NSW and is involved in the teaching of trainee dermatologists, haematologists, immunologists and head and neck surgeons. Mark was also for over 10years an Examiner for the Primaries of the RACDS, with a particular emphasis on clinical pharmacology.

He has over 50 scientific publications, a contributor to the textbook, Burket's Oral Medicine and on the editorial board of the journal Oral Surgery, Oral Medicine, Oral Pathology and Oral Radiology and a reviewer for a number of journals, including the Australian Dental Journal.

ANNUAL DINNER

The course will immediately be followed by a delightful three course dinner. Join your ADA Tasmania colleagues and celebrate a wonderful 2024. Admission to the dinner is included with your event registration.

ADA Tasmania Branch AGM to be held during lunch, exact timing to be announced closer to the event.

Unable to attend the lecture but interested in the social event? Contact ADA NSW CPD directly to discuss your options.

Important Information and Terms and Conditions

Illness and Misadventure

If you cannot attend your scheduled course for any reason, please contact us on 1800 737 346 to discuss options available to you.

Advertising in this Program Guide

All bookings and enquiries concerning advertising should be directed to admin@adacpd.com.au. Acceptance of advertisements does not imply endorsement by the Australian Dental Association (NSW Branch) Limited (ADA NSW) or the ADA NSW Centre for Professional Dental Development Limited (CPD).

Centre for Professional Development

Street: 1 Atchison Street, St Leonards, NSW 2065
Postal: PO Box 132, St Leonards, NSW 1590
Phone: 1800 737 346
Email: admin@adacpd.com.au
Web: www.adacpd.com.au

Registration information

Register online at www.adacpd.com.au, by emailing admin@adacpd.com.au or call us on 1800 737 346

Payments and Registration

Delegate places in events are confirmed once full payment has been received. While credit card is the preferred method of payment, CPD will provide an invoice with 14-day payment terms to those participants who choose to pay by cheque. CPD reserves the right to apply a 10 percent surcharge for registrations made within three (3) business days of an event. (CPD accepts payment by Visa, Mastercard, American Express, Cheque, Direct Debit or Bank Cheque).

In order to receive membership discounts, members must be financial for the relevant category at the time the course or event is held. ADA NSW reserves the right to contact delegates to seek payment of the fee difference where membership has lapsed.

GST

All course fees include 10 percent GST in

the total cost except where stated. All tax invoices will show CPD's ABN 34 000 021 232.

Delegate cancellation/refunds for hands-on programs

For cancellations of hands-on program places made at least four (4) weeks* prior to the event in question, a credit note for the full course fee will be given to be used towards a future course. A credit note of 50 percent of the course fee will be given for cancellations of up to two (2) weeks* prior to the event. No credit will be given for cancellations made with less than two (2) weeks* notice. CPD takes no responsibility for changes to delegate work commitments or personal circumstances. Cancellations must be received in writing by email. Substitution of delegates can occur at any time at no additional cost. Course fees or part thereof cannot be transferred to another event when cancellation occurs within two (2) weeks* of the original event. (*1 week equals 7 full days). A \$50 administration fee applies to ALL cancellations.

Delegate cancellation/refunds for lecture programs

For cancellations of lecture program places made at least two (2) weeks* prior to the event in question, a credit note for the full course fee will be given to be used towards a future course. A credit note of 50 percent of the course fee will be given for cancellations up to one (1) week* prior to the event. No credit note will be given for cancellations made with less than one (1) weeks* notice. CPD takes no responsibility for changes to delegate work commitments or personal circumstances. Cancellations must be received in writing by email. Substitution of delegates can occur at any time at no additional cost. Course fees or part thereof cannot be transferred to another event when cancellation occurs within one (1) week* of the original event. (*1 week equals 7 full days). A \$50 administration fee applies to ALL cancellations.

Failure to attend

A delegate who fails to attend will be liable for 100 percent of the course fee.

Program cancellation/rescheduling

CPD takes all care to produce high quality program events that deliver as promised. All advertised details are correct at the time of publication. However when circumstances beyond our control prevail, CPD reserves the right to cancel, postpone, relocate or reschedule any program. If CPD exercises this option, CPD will employ reasonable endeavours to notify delegates as early as possible to minimise inconvenience. CPD will not accept any responsibility for travel and accommodation costs incurred by delegates. Where a refund is due to a delegate, the appropriate refund will be issued within 30 days of notification. In the case of program postponement or rescheduling, the delegate may choose to transfer the fee from the cancelled course to a future program of equal value. In this case these terms and conditions apply.

Transfers

In the situation whereby a transfer is permitted a maximum of two (2) transfers can be made per registration. Transfers are not permitted within 2 weeks of hands-on programs and 1 week of lecture programs.

Full Terms and Conditions

Visit our website for the complete list of important information and Terms and Conditions. .

HOW TO REGISTER



By Phone

1800 737 346

By email

admin@adacpd.com.au

Online

www.adacpd.com.au

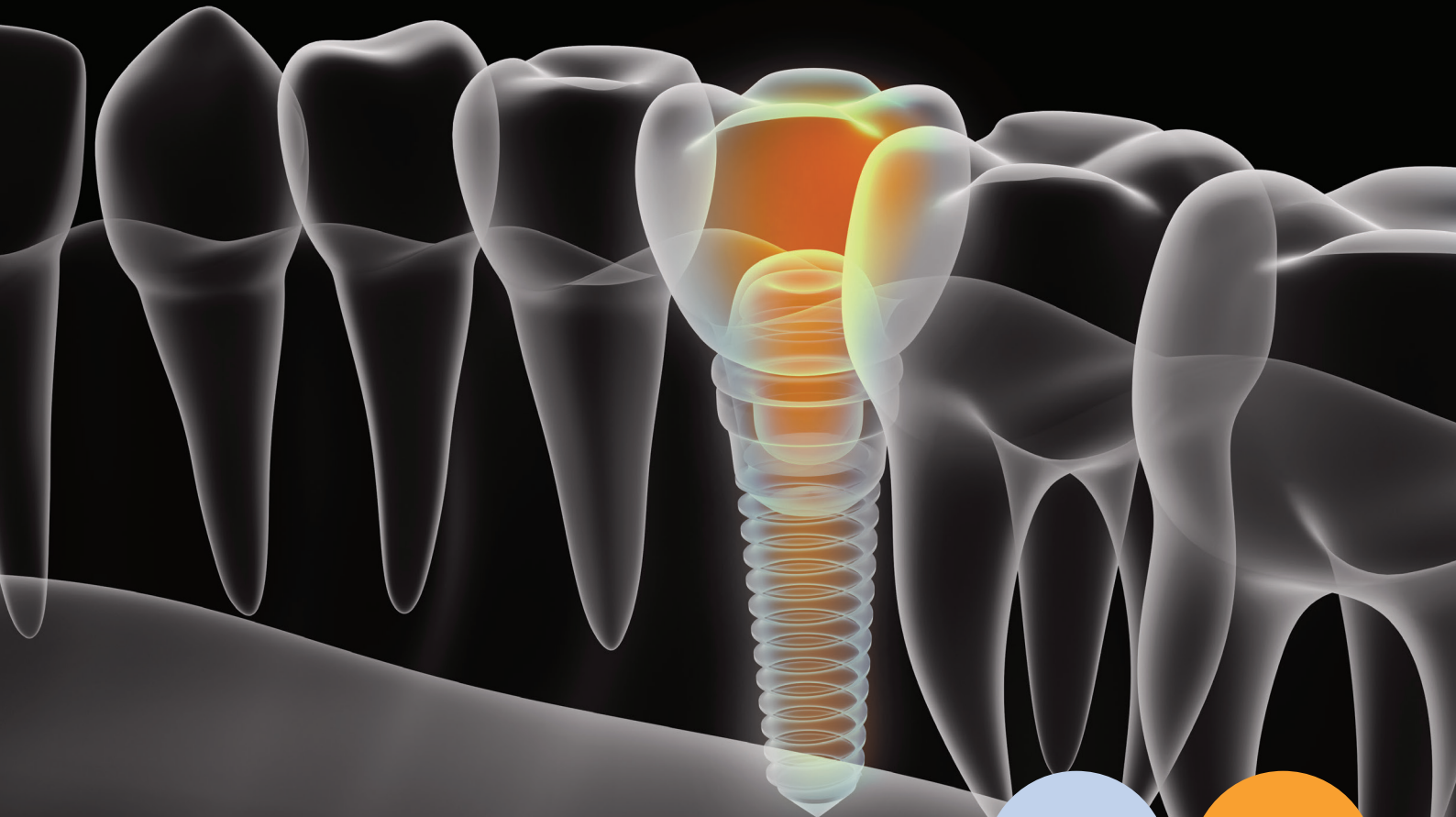
Agreement

Your registration for these events indicates acceptance of CPD's Terms and Conditions and Cancellation Policy.



ADA NSW
Centre for
Professional
Development

FROM SURGERY.....▶ TO RESTORATION



FOUNDATION LEVEL IMPLANT MODULAR COURSE

This foundation level program is intended for dental practitioners wishing to develop their theoretical knowledge and practical clinical experience in the treatment planning, surgical placement, restoration and maintenance of dental implants.

Speakers include: Dr Robert Santosa, Dr Brian Chee, Dr Vijay Tumuluri, Dr Jeremy Vo, Dr Sal Shahidi, and Dr Joseph Lee.

4 MODULES
FROM
\$6,200

52
CPD
HOURS

2024 MODULE DATES

MODULE 1:
Friday 23 – Saturday 24 February

MODULE 2:
Friday 3 – Saturday 4 May

MODULE 3:
Friday 27 – Saturday 28 September

MODULE 4:
Friday – Saturday 16 November



FIND OUT MORE
AND BOOK ONLINE

www.adansw.com.au/CPD/Courses

SPONSORED BY:



CPD044